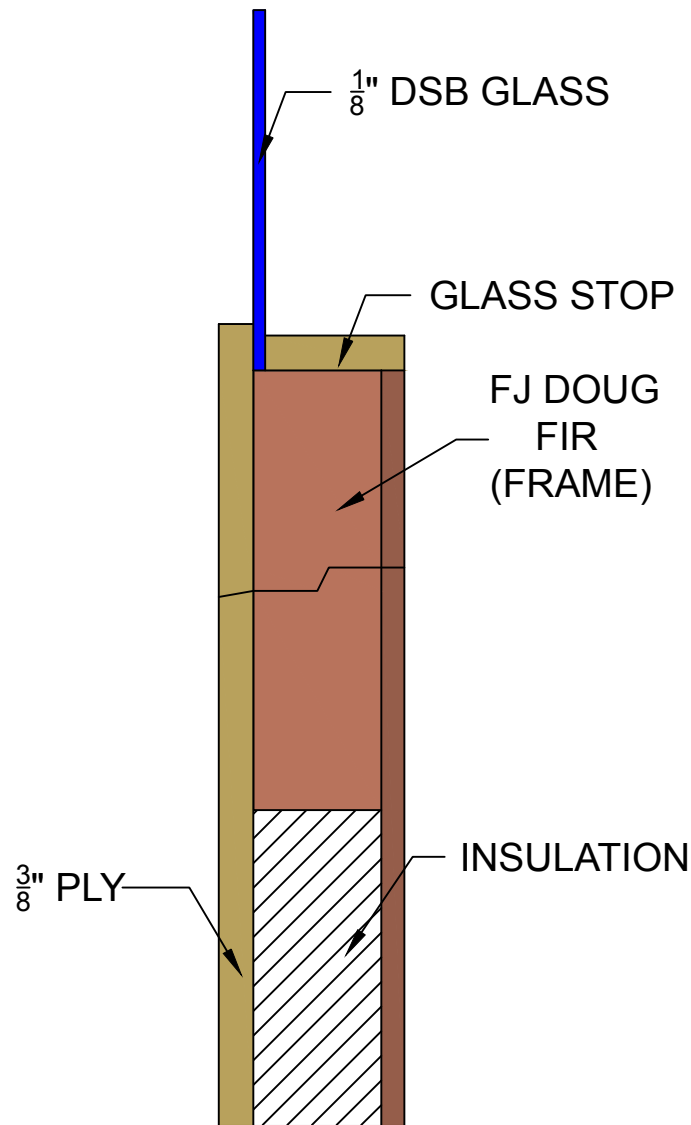


# FLUSH FULL CUSTOM 3 LAYER DIAGRAM



## Flush Ply Paint Grade (primed white)

Back (layer 1): 1/4" Luan

Frame (layer 2): 1-3/8" FJ (Finger Joint) Hem Fir (stiles every 24")

Insulation: 1-3/8" Polystyrene

Face (layer 3): 3/8" Baltic Birch Ply

## Flush Ply Stain Grain (unfinished)

Back (layer 1): 1/4" Luan

Frame (layer 2): 1-3/8" FJ (Finger Joint) Hem Fir (stiles every 24")

Insulation: 1-3/8" Polystyrene

Face (layer 3): 3/8" Aquatek Marine Ply